

BARKER

ENGLAND
ESTABLISHED 1880

Creative Collection

BARKER

ENGLISH SHOEMAKERS SINCE 1880

AUTUMN / WINTER 2021



Barker is proud to present our Autumn / Winter 2021 collection in a season of hope and promise.

New additions can be discovered in several of the Barker ranges including the BarkerTech, BOEB Archive, Creative and Professional collections.

A key focus this season is casual comfort with several new Creative collection styles (Bill, Dean, Fred and Terry) featuring the lightweight XL EXTRALIGHT sole for shock absorption and increased comfort in every step.

Barker boot highlights include the new Harrowick (BOEB Archive) and Hawkin (BarkerTech) Chelsea boots alongside the Bronx Chukka boot.

Additional colourways in the Spencer Oxford Brogue come as a result of increased demand for the G fitting Creative collection style. Furthermore, the Calder, Nairn and Wilson have seen Autumnal suede and grain leathers added for Autumn / Winter 2021.

Explore the Barker Autumn / Winter 2021 collection overleaf.

Made in Earls Barton
Northampton, England



BARKER

ENGLISH SHOEMAKERS SINCE 1880

Barker History	4	Ladies Collection	25
Archive Collection	7	Leather Goods	27
Handcrafted Collection	9	Leather Belts	28
Country Collection	10	Shoe Care Accessories	29
Professional Collection	12	Caring for your Shoes	30
Creative Collection	16	Refurbishment Service	30
BarkerTech Collection	21	Showcards	31
UltraFlex Collection	22	Last Guide	32
BarkerFlex Collection	22	Index	34
Casual Collection	23	Contact Information	36
Moccasin Collection	24		

AUTUMN / WINTER 2021



Arthur Barker
Founder 1880

Arthur Barker, known affectionately by all the succeeding members of his family as Great Grandfather Barker, must have been a man of great resolve and tenacity of purpose. He began by working in a 'shop' (or workshop) situated at the bottom of a house garden in North Road, Earls Barton.

In the earlier days, Arthur Barker personally made hand sewn boots or shoes, but in 1880 he founded a company working with several others and sending work out to home workers in their individual 'shops'.

After a time, Arthur moved his business to a small factory in Station Road and in 1905 his three sons joined him in 'The Firm' as it was called. During this time Arthur's eldest son Charles left to become a leather importer. Ernest and Arthur junior worked on with their father during World War I, fulfilling contracts for army boots.

The 1920s saw Barker producing fine quality footwear in considerable quantity including establishing export trade in South Africa which grew rapidly over several years.

In 1921, Arthur the 'Grand old man' died leaving the Barker family business to his sons to continue. In 1933, a new branch was established in South Africa with several workers from Earls Barton, known as 'The Pioneers' emigrated and settled there. Arthur Barker junior managed the South African branch with the help of his son Roy, who subsequently ran it until 1965.

After World War II, Barker Shoes expanded considerably in Earls Barton with a new factory built in Station Road for the making of ladies shoes. This enabled the older factory to concentrate on men's footwear only.

In 1955, the third generation of Barkers joined 'The Firm' which saw Albert become one of the world's finest shoe designers while Charles steered the business until his early eighties. During 1956 the fourth generation joined the business and following in the footsteps of his predecessors, William (Albert's son), became a respected shoe maker and shoe designer until his untimely death in 1996.

An impressive modern factory was purpose-built in 1986 to allow Barker to continue its shoemaking tradition and is where each pair of Barker Goodyear welted shoes are still made today.





AUTUMN / WINTER 2021 ARCHIVE COLLECTION

The Barker Of Earls Barton Archive collection is an exclusive range rediscovering our village shoe making history.

Several iconic Barker silhouettes have been re-interpreted with premium grain leather and Dainite rubber soles for Autumn / Winter 2021 including the Harrowick Chelsea Boot.

THE VILLAGE SHOEMAKER

ARCHIVE COLLECTION

HARROWICK (NS)

Last 460 | F | Size 6 - 12

Dainite Rubber Sole | Goodyear Welted

469926 Rosewood Grain

469936 Dark Brown Grain

499976 Cherry Grain



WILSON (NC)

Last 192 | F | Size 6 - 12

Dainite Rubber Sole | Goodyear Welted

467736 Dark Brown Grain

467746 Bitter Choc Suede

467776 Cherry Grain

467786 Terra Suede



MEARS

Last 10 | F | Size 6 - 12

Dainite Rubber Sole | Goodyear Welted

462386 Terra Suede



STATION

Last 460 | F | Size 6 - 12

Dainite Rubber Sole | Goodyear Welted

461946 Snuff Suede

461986 Bitter Choc Suede



BERRY

Last 460 | F | Size 6 - 12

Dainite Rubber Sole | Goodyear Welted

462046 Bitter Choc Suede

462086 Terra Suede



MILBURY

Last 460 | F | Size 6 - 12

Dainite Rubber Sole | Goodyear Welted

462146 Snuff Suede

462186 Bitter Choc Suede

HANDCRAFTED COLLECTION



PLYMOUTH

Last 396 | FX | Sizes 6 - 12
7mm Leather Script Sole | Goodyear Welted
444116 Black Calf
444156 Chestnut Calf

FLEET

Last 464 | F | Sizes 6 - 12
7mm Leather Script Sole | Goodyear Welted
414166 Antique Rosewood Calf



FALSGRAVE

Last 464 | G | Sizes 6 - 12
7mm Leather Script Sole | Goodyear Welted
414817 Black Calf
414847 Dark Brown Shadow Calf

LERWICK

Last 464 | G | Size 6 - 12
7mm Leather Script Sole | Goodyear Welted
431517 Black Calf
431527 Antique Rosewood Calf



JEVINGTON

Last 478 | F | Size 6 - 12
Dainite Rubber Sole | Goodyear Welted
4248FW22 Black Grain
4248FW24 Cherry Grain



JEVINGTON

Last 478 | F | Size 6 - 12
7mm Leather Script Sole | Goodyear Welted
424816 Black Calf
424836 Bitter Choc Suede



COUNTRY COLLECTION

GLENCOE

Last 29 | F | Size 6 - 12
 10mm Vibram Sole | Goodyear Storm Welted
 4281FW02 Navy Grain
 4281FW03 Cedar Grain
 4281FW07 Cherry Grain
 4281FW19 Dark Brown Grain



NAIRN (NC)

Last 29 | F | Size 6 - 12
 10mm Dainite Sole | Goodyear Stormwelted
 927836 Black Calf
 927866 Cherry Grain
 927886 Cedar Grain
927896 Brown Waxy Suede



NOEL (NS)

Last 466 | F | Size 6 - 12
 Vibram V-Lite Sole |
 Goodyear Welted
462736 Brown Chromexcel

DONEGAL

Last 29 | F | Size 6 - 12
 10mm Dainite Sole |
 Goodyear Storm Welted
 450816 Black Grain
 450826 Antique Rosewood Grain

WESTFIELD

Last 29 | F | Size 6 - 12
 10mm Double Leather Sole |
 Goodyear Storm Welted
 312826 Cedar Calf



CALDER (NC)

Last 460 | F | Size 6 - 12
 10mm Dainite Sole | Goodyear Storm Welted
 414926 Cedar Calf
 414936 Dark Brown Grain
 414976 Cherry Grain
414986 Choc Burnished Suede
414996 Grey Suede



KELMARSH

Last 460 | G | Size 6 - 12
10mm Dainite Sole | Goodyear Storm Welted
425027 Cedar Grain
425077 Cherry Grain



ORKNEY

Last 464 | F | Size 6 - 12
10mm Dainite Sole | Goodyear Welted
391676 Cherry Grain



CALVAY

Last 464 | F | Size 6 - 12
10mm Dainite Sole | Goodyear Welted
398926 Cedar Grain
398976 Cherry Grain



SKYE

Last 464 | F | Size 6 - 12
10mm Dainite Sole | Goodyear Welted
398816 Black Grain
398876 Cherry Grain



CALDER in Choc Burnished Suede

PROFESSIONAL COLLECTION



ALBERT

Last 69 | G | Size 5 - 15
7mm Leather Sole
Goodyear Welting
664237 Black Hi-Shine



ALFRED

Last 69 | G | Size 5 - 15
7mm Leather Sole
Goodyear Welting
664337 Black Hi-Shine



ARNOLD

Last 69 | E & G | Size 5 - 12
*13 - 15
7mm Leather Sole
Goodyear Welting
664435 (E) Black Hi-Shine
664437 (G) Black Hi-Shine*



CARUSO

Last 10 | F | Size 6 - 12
7mm Leather Sole | Goodyear Welting
116636 Black Hi-Shine
116676 Burgundy Hi-Shine



CLIVE

Last 69 | F | Size 6 - 12
7mm Leather Sole | Goodyear Welting
681136 Black Hi-Shine
681186 Burgundy Hi-Shine



STUDLAND

Last 487 | F | Size 6 - 12
7mm Barker Rubber Sole | Goodyear Welting
444416 Black Calf
444426 Rosewood Calf
444436 Castagnia Suede

PORTSMOUTH

Last 487 | F | Size 6 - 12
7mm Leather Sole
Goodyear Welting
442416 Black Calf
442426 Dark Walnut



NEWBURY

Last 327 | FX | Size 6 - 15
7mm Leather Sole with Rubber Insert | Goodyear
Welting
260616 Black Hi-Shine
2606FW11 Brandy Hi-Shine



MALTON

Last 386 | F / G | Size 6 - 12
7mm Leather Sole | Goodyear Welted
441717 (G) Black Calf
441727 (G) Cedar Calf
7mm Dainite Sole | Goodyear Welted
4417DW37 (G) Burnt Oak Suede



MALVERN

Last 386 | F / G | Size 6 - 12
7mm Leather Sole | Goodyear Welted
441317 (G) Black Calf
441327 (G) Rosewood Calf
7mm Dainite Sole | Goodyear Welted
4413DW17 (G) Black Calf
4413DW27 (G) Rosewood Calf

MIRFIELD

Last 386 | F / G | Size 6 - 12
7mm Leather Sole | Goodyear Welted
441617 (G) Black Calf
441637 (G) Dark Walnut Calf
7mm Dainite Sole | Goodyear Welted
4416DW17 (G) Black Calf
4416DW37 (G) Dark Walnut Calf



MORDEN

Last 386 | G | Size 6 - 12
7mm Leather Sole | Goodyear Welted
441417 (G) Black Calf



CHELtenham

Last 386 | G | Size 6 - 12
7mm Dainite Sole | Goodyear Welted
327117 Black Hi-Shine



MADELEY

Last 386 | G | Size 6 - 12
4mm Leather Sole Cemented
4070GW11 Black Patent



NORTHCOTE

Last 386 | G | Size 6 - 15
7mm Leather Sole
Goodyear Welted
368317 Black Calf



TUNSTALL

Last 386 | F | Size 6 - 12
7mm Leather Sole
Goodyear Welted
386016 Black Calf



DARLINGTON

Last 443 | F | Size 6 - 12
7mm Leather Sole | Goodyear Welted
409116 Black Hi-Shine
409126 Brandy Hi-Shine



LEO

Last 443 | G | Size 6 - 12
7mm Leather Sole | Goodyear Welted
432517 Black Calf
432527 Hazelnut Calf



LARRY

Last 443 | G | Size 6 - 12
7mm Leather Sole | Goodyear Welted
433117 Black Calf
433127 Cedar Calf



LYLE

Last 443 | G | Size 6 - 12
7mm Barker Rubber Sole
Goodyear Welted
432837 Black Hi-Shine



GOLDINGTON

Last 450 | FX | Size 6 - 12
4mm Leather Sole Cemented
350416 Black Patent / Suede



BURFORD

Last 469 | G | Size 6 - 12
7mm Dainite Sole
Goodyear Welted
399117 Black Calf



BEDALE

Last 469 | G | Size 6 - 12
7mm Leather Sole
Goodyear Welted
401517 Black Hi-Shine



NELSON

Last 469 | G | Size 6 - 12
7mm Leather Sole
Goodyear Welted
449517 Black Hi-Shine
4495GW11 Brandy Hi-Shine



WICKHAM

Last 469 | G | Size 6 - 12
7mm Leather Sole | Goodyear
Welted
392317 Black Hi-Shine



WILTON

Last 469 | G | Size 6 - 12
7mm Leather Sole | Goodyear
Welted
394617 Black Hi-Shine

WINSFORD

Last 469 | G | Size 6 - 12

7mm Leather Sole | Goodyear Welted

- 394517 Black Hi-Shine
- 394547 Dark Walnut Calf
- 394577 Burgundy Hi-Shine
- 394587 Castagna Suede



DUXFORD

Last 469 | G | Size 6 - 12

7mm Leather Sole | Goodyear Welted

- 406317 Black Calf
- 406337 Rosewood Calf

HAMPSTEAD

Last 469 | G | Size 6 - 12

7mm Leather Sole | Goodyear Welted

- 419717 Black Hi-Shine
- 419747 Castagna Suede



WOODBIDGE

Last 469 | G | Size 6 - 12

7mm Leather Sole Goodyear Welted

- 394817 Black Hi-Shine
- 394847 Brandy Hi-Shine

MANSFIELD

Last 486 | F | Size 6 - 12

7mm Leather Sole | Goodyear Welted

- 438916 Black Calf
- 438926 Brown Waxy Suede
- 438946 Walnut Calf



Last 486 | F | Size 6 - 12

7mm Dainite Sole | Goodyear Welted

- 4389FW15 Walnut Calf
- 4389FW16 Mid Brown Waxy Suede
- 4389FW17 Bitter Choc Burnished Suede
- 4389FW20 Black Calf
- 4389FW21 Cherry Grain



CREATIVE COLLECTION



DEAN (NS)

Last 29 | G | Size 6 - 12
 XL Extralight Sole | Goodyear Welted
470027 Antique Rosewood Hand Painted
470037 Chocolate Hands Painted



BILL (NS)

Last 29 | G | Size 6 - 12
 XL Extralight Sole | Goodyear Welted
470127 Antique Rosewood Hand Painted
470137 Chocolate Hand Painted

TERRY (NS)

Last 29 | G | Size 6 - 12
 XL Extralight Sole | Goodyear Welted
470227 Antique Rosewood Hand Painted
470237 Chocolate Hand Painted
470297 Old Snuff Suede



FRED (NS)

Last 29 | G | Size 6 - 12
 XL Extralight Sole | Goodyear Welted
470327 Antique Rosewood Hand Painted
470337 Chocolate Hand Painted
470397 Old Snuff Suede



EMERSON

Last 488 | FX | Size 6 - 12
 7mm Leather Sole | Goodyear Welted
456336 Antique Rosewood Calf / Navy Suede
456346 Walnut Calf / Burgundy Suede



HOPPER

Last 446 | F | Size 6 - 12
 7mm Leather Sole | Goodyear Welted
397326 Cedar Calf / Navy Elastic
3973FW17 Walnut Calf / Burg Elastic

SPENCER

Last 443 | G | Size 6 - 12

Leather Sole | Goodyear Welted

- 467627 Antique Rosewood / Navy Calf
- 467637 Terra Suede / Burgundy Suede
- 467647 Navy Suede / Grey Suede
- 467687 Navy / Grey Handpainted



MCCLEAN

Last 443 | F | Size 6 - 12 * 13 - 15

7mm Leather Sole | Goodyear Welted

- 382926 Cedar Calf / Navy Suede*
- 382986 Cedar Calf / Paisley Laser
- 3829FW23 Rosewood Calf / Navy Suede
- 3829FW30 Red Hand Painted / Navy Suede

- 3829FW31 Navy Hand Painted / Choc Suede
- 3829FW32 Ebony Hand Painted / Navy Suede
- 3829FW35 Antique Rosewood Calf / Paisley Laser



JOHNNY

Last 443 | F | Size 6 - 12

7mm Leather Sole | Goodyear Welted

- 328716 Black Calf
- 328736 Dark Brown Calf



JACKSON

Last 443 | F | Size 6 - 12

7mm Rubber Sole | Goodyear Welted

- 352666 Cedar Calf / Blue Tweed
- 352696 Cedar Calf / Green Tweed



HAIG

Last 443 | G | Size 6 - 12

7mm Leather Sole | Goodyear Welted

- 413127 Cedar Calf / Blue Suede
- 4131GW16 Walnut Calf / Burg Suede

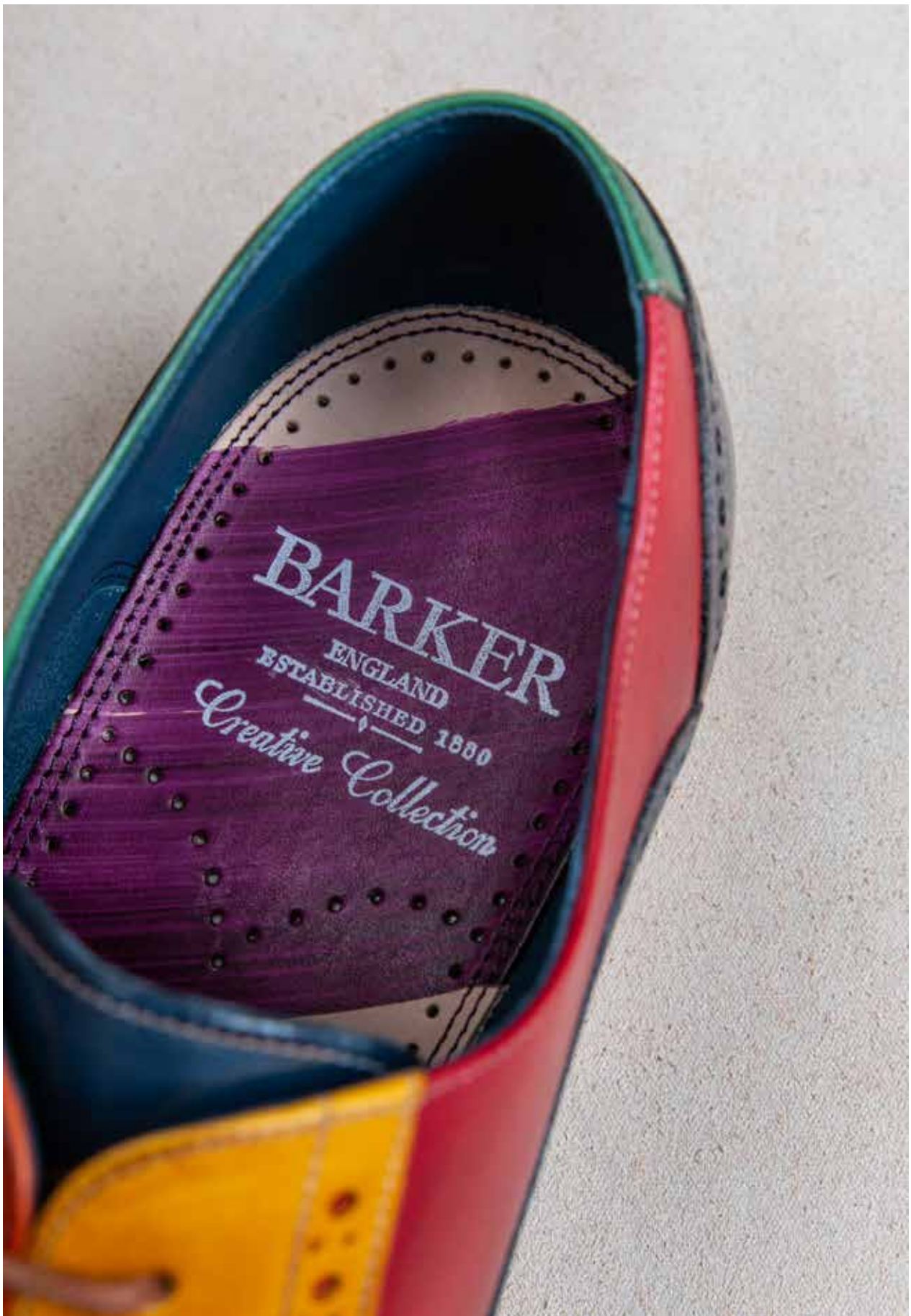


WOODY

Last 443 | F | Size 6 - 12 | *13 - 15

7mm Leather Sole | Goodyear Welted

- 345416 Black Calf
- 345426 Cedar Calf





VALIANT

Last 446 | F | Size 6 - 12
7mm Leather Sole | Goodyear Welted

417826 Brown Hand Painted
417856 Navy Hand Painted
417866 Grey Hand Painted

4178FW22 Ebony / Navy Hand Painted
4178FW41 Ebony / Green / Blue Hand Painted
4178FW42 Red / Grey / Purple Hand Painted
4178FW57 Multicoloured Hand Painted



GRANT

Last 446 | F | Size 6 - 12
7mm Leather Sole Goodyear Welted
337226 Cedar Calf

BAILEY

Last 460 | F | Size 6 - 12
10mm Leather Sole | Goodyear Welted

440526 Ebony Hand Painted
440536 Cedar Hand Painted
440556 Navy Hand Painted



ANTONY

Last 488 | FX | Size 6 - 12
7mm Leather Sole | Goodyear Welted

456616 Black Calf
456626 Antique Rosewood Calf



RUTHERFORD

Last 463 | G | Size 6 - 12
5mm Leather Sole Cemented

369617 Black Hi-Shine
369677 Burgundy Hi-Shine

HARTLEY

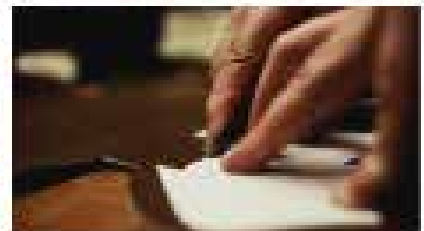
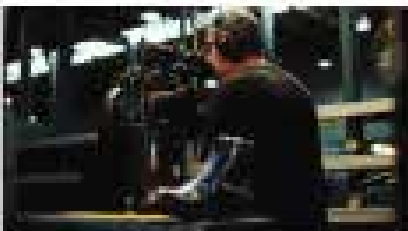
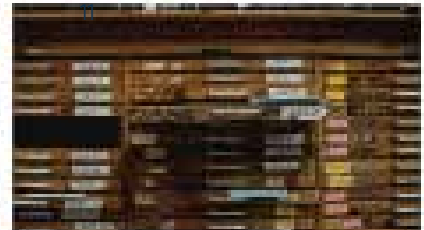
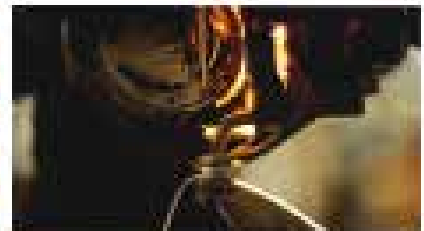
Last 477 | G | Size 6 - 12
7mm Leather Sole | Goodyear Welted

427217 Black Hi-Shine
427227 Brandy Hi-Shine
427237 Cedar Hi-Shine

NICHOLAS

Last 463 | F | Size 6 - 12
7mm Leather Sole | Goodyear Welted
454346 Antique Rosewood / Navy Suede





Proudly made in the village of Earls Barton, Northampton

BARKERTECH COLLECTION

HAWKIN (NS)

Last 493 | FX | Size 6 - 12

7mm Leather Sole with Integrated Rubber Forepart
Goodyear Welted

468216 Black Calf
468236 Walnut Calf



ARMSTRONG

Last 493 | FX | Size 6 - 12

7mm Leather Sole with Integrated Rubber Forepart
Goodyear Welted

450116 Black Calf
450126 Chestnut Calf



ELLON

Last 493 | FX | Size 6 - 12

7mm Leather Sole with Integrated Rubber Forepart
Goodyear Welted

449916 Black Calf
449926 Dark Walnut Calf
449936 Antique Rosewood Calf
449946 Polo Brown Suede

GATES

Last 493 | FX | Size 6 - 12

7mm Leather Sole with Integrated Rubber Forepart
Goodyear Welted

457316 Black Calf
457336 Castagnia Suede



EDISON

Last 493 | FX | Size 6 - 12

7mm Leather Sole with Integrated Rubber Forepart
Goodyear Welted

449716 Black Calf
449726 Dark Walnut Calf



WRIGHT

Last 493 | FX | Size 6 - 12

7mm Leather Sole with Integrated Rubber Forepart
Goodyear Welted

449816 Black Calf
449826 Walnut Calf
4498FW10 Antique Rosewood

TURING

Last 493 | FX | Size 6 - 12

7mm Leather Sole with Integrated Rubber Forepart
Goodyear Welted

450216 Black Calf
450226 Antique Rosewood Calf
450256 Cherry Calf



ULTRA-FLEX COLLECTION

ROMEO

Last 505 | F | Size 6 - 12
 Leather Sole | Bologna Construction
 468116 Black Deerskin
 468126 Brown Deerskin
 468136 Brown Suede



ANDREA

Last 505 | F | Size 6 - 12
 Leather Sole | Bologna Construction
 465826 Dark Brown Calf
 4658FW10 Black Deerskin



CORSO

Last 505 | F | Size 6 - 12
 Leather Sole | Bologna Construction
 466016 Black Calf
 466026 Dark Brown Calf



BARKERFLEX COLLECTION

SOUTHWOLD

Last 463 | G | Size 6 - 12
 6mm Leather Sole | Rubber Forepart Lock-stitched Construction
 447117 Black Calf / Black Deerskin
 447157 Burgundy Hi-Shine / Black Deerskin



RAMSGATE

Last 463 | G | Size 6 - 12
 6mm Leather Sole | Rubber Forepart Lock-stitched Construction
 452317 Black Calf / Deerskin
 452357 Navy Hi-Shine / Navy Deerskin



ROSS

Last 339 | F | Size 6 - 15
 6mm Leather Rubber Island Sole
 288316 Black Calf



STAINES

Last 29 | H | Size 6 - 12
 7mm Leather Sole | Goodyear Welted
 982818 Black Calf / Softie



CASUAL COLLECTION



HARLEM (NS)

Last 460 | F | Size 6 - 12

Wearlight Sole | Goodyear welted

470516 Black Suede / Black Calf

470526 Snuff Suede / Cedar Claf

470536 Bitter Choc Suede / Walnut Calf



BRONX (NS)

Last 460 | F | Size 6 - 12

Wearlight Sole | Goodyear Welted

470426 Snuff Suede/ Cedar Calf

470436 Bitter Choc / Walnut Calf



BERT

Last 484 | F | European Sizes 40 - 46

Rubber Cup Sole | Side Wall Stitched

467926 Cedar Grain

497996 White Grain



SEB (NC)

Last 504 | F | European Size 40 - 46

Athletic & Lightweight Sole

459206 White Calf

459226 Antique Rosewood Calf

459256 Navy Calf



GREG (NC)

Last 484 | F | European Sizes 40 - 46

Rubber Cup Sole | Side Wall Stitched

4697FW10 Multi Colour

4697FW26 Tan Suede / Brown Grain

4697FW36 Brown Suede / Brown Grain

4697FW46 Antique Rosewood

4697FW56 Navy Suede



WALLIS

Last 471 | G | European Size 40 - 46

Rubber Sole | Lock-stitch

400526 Brown Oiled Calf

400586 Navy Blue Suede / Cedar

MOCCASIN COLLECTION



LAURIE

Last 62 | G | Size 6 - 12
8mm Leather Sole | Lock-stitched
362217 Black Kid



WESLEY

Last 62 | G | Size 6 - 12
8mm Leather Sole
Rubber Forepart | Lock-stitched
313737 Black Calf
313747 Chestnut Calf



LAURENCE

Last 151 | G | Size 6 - 12
6mm Leather Sole
Lock-stitched | Rubber Insert
923817 Black Kid



JEFFERSON

Last 151 | G | Size 5 - 12 *13 - 15
6mm Leather Sole Unit | Lock-stitched
Rubber Forepart
849217 Black Kid
849277 Burgundy / Black Kid



WADE

Last 68 | G | Size 6 - 12
6mm Leather Sole | Lock-stitched
315217 Black Kid
315277 Burgundy Kid



NEWINGTON

Last 462 | F | Size 6 - 12
6mm Leather Sole | Lock-stitch
370516 Black Hi-Shine
370576 Burgundy Hi-Shine



JAVRON

Last 436 | G | Size 6 - 12
6mm Leather Sole | Lock-stitched
181117 Black Calf
181127 Brown Burnished Calf



WILLIAM

Last 465 | G | Size 6 - 12
6mm Leather Sole | Lock-stitched
394467 Cedar Calf
394497 Dark Navy Suede

LEDLEY

Last 483 | G | Size 6 - 12
6mm Leather Sole | Lock-stitched | Bologna Construction
435417 Black Deerskin
435427 Cedar Grain
435477 Cherry Grain
435497 Castagna Suede



LADIES COLLECTION

BONNIE (NS)

Last 5028 | D | Size 3 - 8
Wearlight Sole | Goodyear Welting
725524 Cedar Grain
725574 Cherry Grain



EVA (NS)

Last 5028 | D | Size 3 - 8
Wearlight Sole | Goodyear Welting
725624 Cedar Grain
725654 Navy Grain
725674 Cherry Grain



FEARNE (NC)

Last 5023 | D | Size 3 - 8
6mm Leather Sole | Goodyear Welting
712734 Antique Rosewood Hand Painted
7127DW57 Multicoloured Hand Painted
7127DW72 Purple Hand Painted



FREYA

Last 5023 | D | Size 3 - 8
6mm Leather Sole | Goodyear Welting
712719 Cedar Calf
7127DW66 Walnut / Brown Tweed
7127DW78 Black Hi-Shine



IMOGEN

Last 5023 | D | Size 3 - 8
6mm Leather Sole | Goodyear Welting
719614 Black Calf



SLOANE (NC)

Last 5024 | D | Size 3 - 8
6mm Leather Sole | Goodyear Welting
715226 Cedar Calf
7152DW51 Cedar Grain





SABRINA

Shape 5023 | D | Size 3 - 8
6mm Leather Sole | Goodyear Welted
713626 Cedar Calf



ALEXANDRA

Last 5024 | D | Size 3 - 8
6mm Leather Sole | Goodyear Welted
715724 Cedar Calf / Blue Strap

VIOLET

Shape 5024 | D | Size 3 - 8
6mm Leather Sole | Goodyear Welted
717226 Cedar Calf / Blue Elastic
7172DW13 Black calf / Black Elastic
7172DW14 Walnut Calf / Brown Elastic
7172DW25 Antique Rosewood Hand Painted



GRACE

Shape 5024 | D | Size 3 - 8
6mm Leather Sole | Goodyear Welted
719334 Cedar Calf / Green Harris Tweed
719344 Walnut Calf / Brown Tweed

JULIE

Shape 5028 | D | Size 3 - 8
10mm Vibram Sole | Goodyear Stormwelted
722326 Cedar Grain
7223DW10 Black Grain



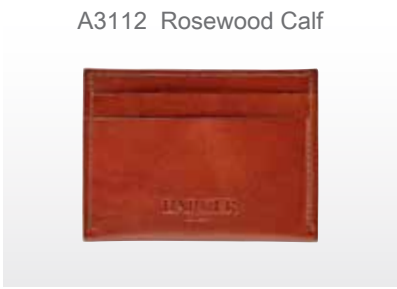
GINA

Shape 5029 | D | Size 3 - 8
6mm Leather Sole | Goodyear Welted
722226 Mid Brown Waxy Suede
722276 Plum Waxy Suede

BIFOLD LEATHER WALLETS



STRAIGHT & CURVED LEATHER CARD HOLDERS



The Barker 'Made In England' accessories are handcrafted using premium calf leather and embossed Barker branding. Both the Bi-fold Wallet and Card Holder is presented in a navy Barker gift box.

PLAIN LEATHER BELTS

All belts supplied in one size, cut to fit



ABP25 Cedar Paisley Laser



ABP32 Rosewood Calf



ABP09 Cedar Grain Calf



ABP01 Black Hi-Shine



ABP02 Cedar Grain



ABP04 Burgundy Hi-Shine



ABP07 Antique Rosewood Calf



ABP10 Cherry Grain



ABP11 Black Calf



ABP16 Walnut Calf



ABP29 Castagnia Suede



ABP34 Dark Walnut

BROGUE BELTS



ABB02 Cedar Grain

HAND PAINTED BELTS



ABP42 Plain Brown Hand Painted



ABP43 Plain Red Hand Painted



ABP45 Plain Navy Hand Painted

SHOE CARE ACCESSORIES



Wooden Shoe Trees (pairs)

A01 Available in all sizes 6 - 15



Shoe Cream (Singles)

A2307S Black
A2308S Dark Brown
A2313S Burgundy
A2311S Tan
A2306S Neutral



Hand Painted Shoe Cream

A451 Brown
A452 Navy
A453 Blue
A454 Grey
A455 Red
A456 Purple
A459 Rosewood
A460 Cedar
A461 Ebony



Quality Wax Shoe Polish (Singles)

A2304S Black
A2303S Tan
A2302S Brown
A2305S Burgundy
A2301S Neutral



Suede / Nubuck Cleaner (packs of 12)

A425



Small Horsehair Brush (pack of 12)

A424BLK Black



Small Horsehair Brush (pack of 12)

A424NAT Natural



Large Horsehairs Brush (packs of 12)

A423 Natural
A422 Black



Suede Spray (packs of 12)

A181



Applicator Brush (pack of 12)

A420 Natural
A421 Black



Genuine Shoe Horn Lift

7" A412
15" A411



Shoe Care Kit

A68



Valet Box

A711



Insoles (single pairs)

Mens AL104S
Ladies AL105S

CARING FOR YOUR BARKER SHOES



Remove all dirt when dry and brush up the nap using a stiff bristle suede brush. Stains can be removed with a suede solvent cleaner and smooth patches restored with fine sandpaper.

Kid Shoes

Kid shoes or other lightweight leathers should be polished with a good neutral or coloured shoe cream.

Patent and Hi-Shine

Leather Shoes Clean with a damp cloth or use a recommended patent leather spray or cream.

Calf Aniline Shoes

To develop a rich and lasting guardsman's finish polish regularly with a quality polish of matching colour, this will maintain the aniline dye finish of the superior calf skins used by Barkers.

Your Barker Shoes will give you long and faithful service providing you follow these simple rules.

- Always clean regularly with a brush or damp cloth to remove all traces of dirt before applying a good quality shoe cream or polish of the correct colour. Barker shoe care kits contain all the necessary equipment in neat travel cases.
- Never dry wet shoes near fire, radiators or hot pipes. Good leather deserves good treatment and slow natural drying is always best.
- To keep shoes in perfect shape we recommend the use of shoe trees and a shoe horn.

Suede Shoes



REFURBISHMENT SERVICE

A pair of Barker shoes are made for life and you can prolong their lifespan by restoring the soles and uppers through our refurbishment service.

During this process your shoes will be put back onto their original lasts, the heels and soles are removed and the shoes make their way back through the factory to be re-welted, re-soled and re-heeled.

After the refurbishment has been completed the shoes are cleaned, polished and boxed. The service can take an estimated time of 6-8 weeks to complete from receipt (due to Factory Holidays this might be extended up to 10 weeks).

For Refurbishment Queries please email: customercare@barkershoes.com

Please note that we cannot accept shoes back for refurbishment if they have been re-soled by an outside party previously.

Process Details

After placing your refurbishment order, you will receive an email providing you with details on how to post your shoes to us.

We would suggest using a track and trace service using a reputable courier, paying the local charges to get the shoes to us.

Please note we will only post shoes back to the billing address provided on the order.

Our refurbishment department only repair Barker Shoes. Regrettably we cannot repair our Barker Sneakers due to the manufacturing process.

Please don't send us your accessories with your shoes as we cannot be held liable for them. All we need is your beloved Baker Shoes and we will replace all laces and shoeboxes with each repair.



SHOWCARDS



Caruso
A263 | Size A4



Winsford
A264 | Size A4



Orkney
A265 | Size A4



Grant
A268 | Size A5



Malvern
A261 | Size A5



BarkerTech
A901A | Size A4



BARKER
McClean
A903 | Size A5



BARKER
Nicholas
A904 | Size A4



BarkerTech
A901B | Size A5



BARKER
Julie & Glencoe Boots
A902 | Size A5



BARKER
Charles
A900 | Size A5

LAST GUIDE

10



29



62



69



151



327



339



386



396



436



443



446



450



460



462



463



LAST GUIDE

464



465



468



469



471



473



477



478



483



485



486



487



488



493



499



505



SHOE STYLE	NEW	PAGE	FITTING	LAST	SHOE STYLE	NEW	PAGE	FITTING	SHAPE
Albert		12	G	69	Hartley		19	G	477
Alfred		12	G	69	Harrowick	NS	8	F	460
Andrea		22	F	505	Hawkin	NS	21	FX	493
Antony		19	FX	488	Henri		29	F	471
Armstrong		21	FX	493	Hopper		16	F	446
Arnold		12	E / G	69	Jackson		17	F	443
Bailey		19	F	460	Jake		32	F	462
Bedale		14	G	469	Javron		24	G	436
Berry		8	F	460	Jefferson		24	G	151
Bert		23	F	484	Jevington		9	F	478
Bill	NS	16	G	29	Jimmy		22	G	465
Bronx	NS	23	F	460	Johnny		17	F	443
Burford		14	G	469	Kelmarsh		11	G	460
Caruso		12	F	10	Knights		9	F	460
Calder	NC	10	F	460	Larry		14	G	443
Calvay		11	F	464	Laurence		24	G	151
Cheltenham		13	G	386	Laurie		24	G	62
Clive		12	F	69	Ledley		25	G	483
Corso		22	F	505	Leo		14	G	443
Darlington		14	F	443	Lerwick		9	G	464
Dean	NS	16	G	29	Liam		18	G	443
Donegal		10	F	26	Luke		17	G	443
Duxford		15	G	29	Lyle		14	G	443
Ellon		21	FX	493	Madeley		13	G	386
Edison		21	FX	493	Malton		13	F / G	386
Emerson		16	FX	488	Malvern		13	F / G	386
Falsgrave		9	G	464	Mansfield		15	F	486
Fleet		9	F	464	Mears		8	F	10
Fred	NS	16	G	29	McCleen		17	F	443
Gates		21	FX	493	Midhurst		14	G	386
Glencoe		10	F	29	Milbury		8	F	460
Goldington		14	FX	450	Mirfield		13	F / G	386
Grant		19	F	446	Morden		13	F / G	386
Greg	NC	23	F	484	Morpeth		14	G	386
Haig		17	G	443	Nairn	NC	10	F	29
Hampstead		15	G	469	Nelson		14	G	469
Harlem	NS	23	F	460	Newbury		12	FX	327

SHOE STYLE	NEW	PAGE	FITTING	SHAPE
Newington		24	F	462
Nicholas		19	F	463
Noel	NS	10	F	466
Northcote		13	G	386
Orkney		11	F	464
Plymouth		9	FX	396
Portsmouth		12	F	487
Ramsgate		22	G	463
Romeo		22	F	505
Ross		22	F	339
Rutherford		19	G	463
Seb	NC	23	F	504
Skye		11	F	464
Southwold		22	G	463
Spencer		17	G	443
Staines		22	H	29
Station		8	F	460
Studland		12	F	487
Terry	NS	16	G	29
Tunstall		13	F	386
Turing		21	FX	493
Valiant		19	F	446
Wade		24	G	68
Wallis		23	F	471
Wesley		24	G	62
Westfield		10	F	29
Wickham		14	G	469
William		24	G	465
Wilson	NC	8	F	192
Wilton		14	G	469
Winsford	NC	15	G	469
Woodbridge		15	G	469
Woody		17	F	443
Wright		21	FX	493

Ladies Shoes				
Alexandra		26	D	5024
Bonnie	NS	25	D	5028
Eva	NS	25	D	5028
Fearne		25	DW	5023
Freya	NC	25	D	5023
Gina		26	D	5029
Grace		26	D	5024
Imogen		25	D	5023
Julie		26	D	5028
Sabrina		26	D	5023
Sloane	NC	25	D	5024
Violet		26	D	5024

Please Note:
* NC - New Colour
* NS - New Style

BARKER SHOES LIMITED

Station Road
Earls Barton
Northampton
NN6 0NT
England

Tel: 01604 810387

Fax: 01604 812350

Email: barker@barkershoes.co.uk

www.barkershoes.com

RETAIL STORES

London

215 Regent Street
London
W1B 4NG

Tel: 0207 494 3069

Fax: 0207 494 3069

38 Jermyn Street
London
SW1Y 6DN

Tel: 0207 434 3533

56b Old Broad Street
London
EC2M 1RX

Tel: 0207 283 7896

Mall Level -1
Cabot Place
Canary Wharf, London
E14 4QS,

Tel: 0207 715 9249

52 Bow Lane
London
EC4 M9DJ

Tel: 0207 248 0508

MOSCOW STORES

Crocus City

Shopping Mall Crocus City
65–66 km MKAD

2nd Floor

Section Number 145

Krasnogorsk

Barker Shoe Store

Telephone: +7 495 727 1705

Mobile: +7 929 519 9478

Email: barkerwtt@gmail.com

Afimall City

Afimall City Shop Barker
Presnenskaya Naberezhnaya
Dom 2

3rd Floor

Shop – c21a

Moscow

Mobile: +7 925 3805815

Moscow Office

Telephone: +7 495 727 1705

Email: barkerwtt@gmail.com

FRANCHISES / CONCESSIONS

France

5th Floor

Footwear Department

Printemps Haussmann

64 Boulevard Haussmann

75009 Paris

Italy

F.lli Sanvito s.n.c.

C.so di P.ta Vigentina, 38

20122 Milano

Tele Fax: +39 02 58314951

Czech Republic

Havirska 6

11000 Prague 1

Tel: +420 242 493 134

Russia

Kashirskoye Highway

Torgoviy Tsentr Vegas

Moscow

Tel: +7 903 5096046

Kapitoly Barker Store

Prospect Vernadskovo

House 6

Moscow

Mobile: +7 903 5096046

Ukraine

89 Krasnoarmeiskaya Street

Kiev

Ukraine

Tel: +3804 4528 1779



BARKER

ENGLISH SHOEMAKERS SINCE 1880

www.barkershoes.com

@BarkerShoesLtd